

### PLANT LIST AND LEGEND: STAGE 1 PERMIT

USE TYPE	SYMBOL	BOTANICAL NAME	SIZE/ COMMON NAME	HEIGHT/ SPACING	REMARKS	WATER USE	
STREET FRONTS	[Symbol]	WASHINGTON BLVD STREET TREE	ACER RUBRUM 'RED SUNSET'	24 BOX	40'/20' MATCHED	MED	
		SUBORDINATE TREE	PIRUS CALLERYANA 'REDSPIRE'	24 BOX	35'/25' MATCHED	MED	
		STREET 'A'	ULMUS PARVIFOLIA TRUE GREEN 15 G./VARIES	35'/40' DOUBLE ROW	MED		
		STREET 'B'	PRINUS HALPENSIS ALLEPO PINE	15 G./VARIES	40'/40' MATCHED	LOW	
PARKING LOTS AND PERIMETER	[Symbol]	SHADE TREE	ACER NORUM GREENCOLUMBIA BLACK MAPLE	15 G./VARIES	60'/25' MATCHED	MED	
		QUERCUS VIRGINIANA SOUTHERN LIVE OAK	15 G./VARIES	60'/40' MATCHED	MED		
		PISTACIA CHINENSIS CHINESE PISTACHE	15 G./VARIES	40'/40' MATCHED	LOW		
		PLATANUS ACERIFOLIA BLOODGOOD	24 BOX	60'/40' MATCHED	MED		
		QUERCUS X ROBUR CRIMSON SPICE OAK	15 G./VARIES	50'/20' MATCHED	MED		
		SUBORDINATE TREE	PIRUS HALPENSIS ALLEPO PINE	15 G./VARIES	40'/40' MATCHED	LOW	
		QUERCUS LOBATA VALLEY OAK	15 G./VARIES	60'/50' MATCHED	LOW		
		QUERCUS DEODORA DEODAR CEDAR	24 BOX	70'/35' MATCHED	LOW		
		QUERCUS WISLIZNERI INTERIOR LIVE OAK	15 G./VARIES	40'/40' NATURAL	LOW		
		ACCENT TREE	CORNUS COCCYRHA 'ROYAL PURPLES'	15 G./VARIES	15'/15' MATCHED	LOW	
		SMOKE TREE	FRAXINUS PENNSYLVANICA 'DODGE'	15 G./VARIES	50'/25' MATCHED	MED	
		POPULUS ALBA PYRAMIDALIS BOLLEANA POPLAR	24 BOX	80'/15' MATCHED	HGH		
UTILITY EASEMENT	[Symbol]	TREES	LAURUS NOBILIS GRECIAN LAUREL	15 G./VARIES	10'/15' MATCHED	LOW	
		SMOKE TREE	CHILLOPSIS LINEARIS MONHEW TIMELESS BEAUTY DESERT WILLOW	15 G./VARIES	15'/15' MATCHED	LOW	
		ACCENT TREE	RHAPHOLEPIS L. MAJESTIC BEAUTY INDIAN HAWTHORN	15 G./VARIES	10'/10' MATCHED	LOW	
		ACCENT TREE	CERCIS CANADENSIS 'MERLOT'	24 BOX	12'/15' MATCHED	MED	
BUILDING ENVELOPE	[Symbol]	TREES	PIRUS CALLERYANA 'REDSPIRE'	24 BOX	35'/25' MATCHED	MED	
		LAGERSTROEMIA X ARABIDOPSIS CRAPPE MYRTLE	24 BOX	20'/15' MATCHED	LOW		
SHRUB AND GROUNDCOVERS	[Symbol]	BACKGROUND OR FOUNDATION SHRUB MATERIAL	EVERGREEN, LARGE SHRUBS TO 6'-8" USED FOR REDUCING BUILDING MASS OR SCREENING UNDESIRABLE VIEWS.	Botanical Name	Size (Min.)	Spacing	Water Use
		ARCHITECTAPHYLLOS H. MCMAN	1 1/2 GAL	5' o.c.	LOW		
		ARBITUS G. COMPACTA	1 1/2 GAL	3' o.c.	LOW		
		GREVILLEA DANBERRA	1 1/2 GAL	6' o.c.	LOW		
		NEURUM OLIVACEUM 'MIS ROEDING'	1 1/2 GAL	6' o.c.	LOW		
		FRANGLIA CALIFORNICA	5 GAL	6' o.c.	MED		
		RHAPHOLEPIS MAJESTIC BEAUTY	5 GAL	6' o.c.	LOW		
		XYSOMA C. 'COMPACTA'	5 GAL	6' o.c.	LOW		
		FACER SHRUB MATERIAL	EVERGREEN OR PERENNIAL SHRUBS TO 4'-6" USED FOR 'TERMINAL' OF PLANT MATERIAL. SEASONAL COLOR AND SOFTENING OF BUILDING EDGES AND FOUNDATION SHRUBS.	Botanical Name	Size (Min.)	Spacing	Water Use
		CANTHUS SPP.	2 GAL	4' o.c.	LOW		
RHAMNUS 'SAN BRUNO'	2 GAL	4' o.c.	LOW				
CISTUS SPP.	2 GAL	4' o.c.	LOW				
GALLISTEMON LITTLE JOHN	1 1/2 GAL	3' o.c.	LOW				
LEPTOSPERMUM SPP.	1 1/2 GAL	3' o.c.	MED				
RHAPHOLEPIS SPP.	1 1/2 GAL	4' o.c.	MED				
ROMARINUS Q. TUSCAN BLUE	1 GAL	3' o.c.	LOW				
ACCENT SHRUB MATERIAL	EVERGREEN OR PERENNIAL SHRUBS TO 3'-6", SOMETIMES LARGER. USED FOR AESTHETIC VALUE IN LANDSCAPE THROUGH BLOOM, LEAF COLOR, OR OVERALL CHARACTER.	Botanical Name	Size (Min.)	Spacing	Water Use		
HESPERALOE SPP.	1 GAL	18" o.c.	MED				
DIETES	1 GAL	3' o.c.	LOW				
HEMEROCALLIS HYBRIDS	1 GAL	3' o.c.	LOW				
LANIOLA SPP.	1 GAL	2' o.c.	LOW				
HANDMA 'WANDER DWAFF'	1 GAL	3' o.c.	LOW				
PENNSYLVANICA SPP.	1 GAL	2' o.c.	LOW				
GROUND COVER MATERIAL	[Symbol]	EVERGREEN OR PERENNIAL SHRUBS TO 30" HIGH. USED TO BLANKET LARGER AREAS AND AS A BUFFER BETWEEN SITE WORK EDGES AND FACER SHRUBS.	Botanical Name	Size (Min.)	Spacing	Water Use	
		ARCHITECTAPHYLLOS SPP.	1 GAL	24" o.c.	LOW		
		BACCHARIS PILLULARIS	1 GAL	36" o.c.	MED		
		CORPORA X KIRKII	1 GAL	24" o.c.	LOW		
		NANDINA H. DWARF	1 GAL	36" o.c.	MED		
		ROSMARINUS Q. 'PROSTRATUS'	1 GAL	24" o.c.	LOW		
		ROSA FLORENTINA SPP.	1 GAL	36" o.c.	MED		
		TRACHELOSPERMUM JASMINOIDES	1 GAL	24" o.c.	MED		
		LORENZA INTERLUPTA	1 GAL	24" o.c.	MED		
		ROSA SPP.	1 GAL	24" o.c.	MED		
TURF SODDED - 'BOLEO' TURF TYPE DWARF FESCUE	---	---	---	MED			
TURF SODDED - 'NO MOW FESCUE'	---	---	---	MED			
WATER QUALITY AREAS	[Symbol]	EVERGREEN OR PERENNIAL SHRUBS TO 30" HIGH. USED TO BLANKET LARGER AREAS AND AS A BUFFER BETWEEN SITE WORK EDGES AND FACER SHRUBS.	Botanical Name	Size (Min.)	Spacing	Water Use	
		CORNUS SERICEA	1 GAL	4' o.c.	MED		
		FESTUCA RUBRA	1 GAL	18" o.c.	LOW		
		FESTUCA IONONENSIS	1 GAL	18" o.c.	LOW		
		JUNCEUS BALTICUS	1 GAL	18" o.c.	LOW		
		PRUNUS CISTINA	1 GAL	5' o.c.	LOW		
		ELMUS SPP.	1 GAL	18" o.c.	LOW		
		SALIX PURPUREA	1 GAL	3' o.c.	MED		
		SPERDIA	1 GAL	18" o.c.	LOW		
		ARCHITECTAPHYLLOS LW URIS	1 GAL	36" o.c.	LOW		
MAYONNA COMPACTA	1 GAL	3' o.c.	LOW				
EASTERN AND SOUTHERN BOUNDARY EDGE PLANTING (EXISTING)	[Symbol]	EVERGREEN DROUGHT TOLERANT - USED TO BLANKET LARGER AREAS AND AS A TRANSITION BUFFER BETWEEN DEVELOPMENT AND OPEN SPACE PARCEL 84. BUFFER TO OPEN SPACE PARCEL 84. COMPATIBLE MATERIAL.	Botanical Name	Size (Min.)	Spacing	Water Use	
		NON-IRRIGATED 'GREEN/GOLD BLENDED'	NA	5' o.c.	LOW		
		PRYNCANTIA COCCYRHA 'LORBOFF'	1 GAL	3' o.c.	LOW		
		BIO FILTRATION SOD	SOD	500	MED		
		PRYNCANTIA X PROSTRATUS	1 GAL	24" o.c.	LOW		
		ROSA SPP.	1 GAL	3' o.c.	LOW		
		CORNUS SPP.	1 GAL	3' o.c.	LOW		
		CANTHUS SPP.	1 GAL	2' o.c.	MED		
		CORNUS SPP.	1 GAL	3' o.c.	LOW		
		CANTHUS SPP.	1 GAL	3' o.c.	LOW		

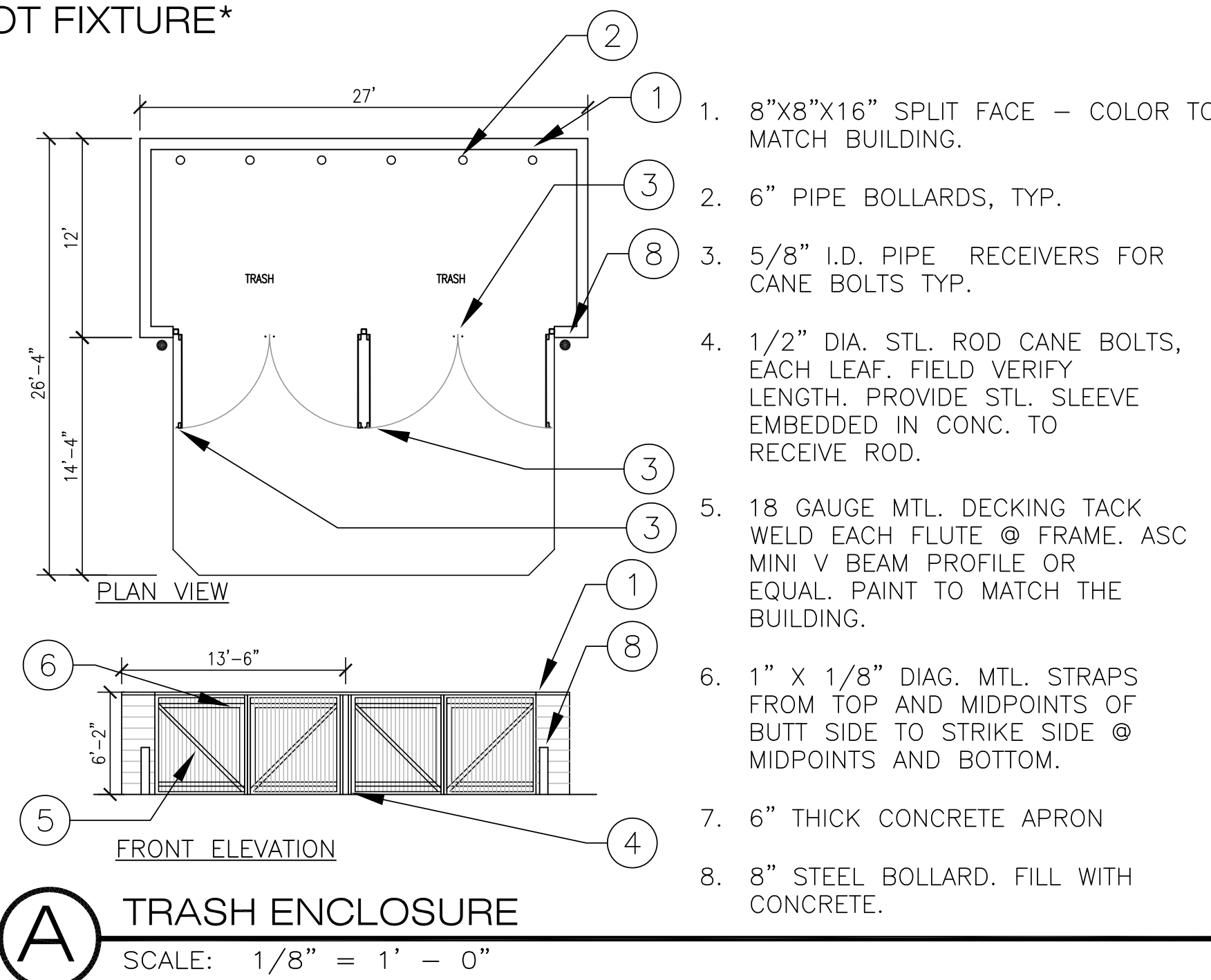
### SITE KEYNOTES

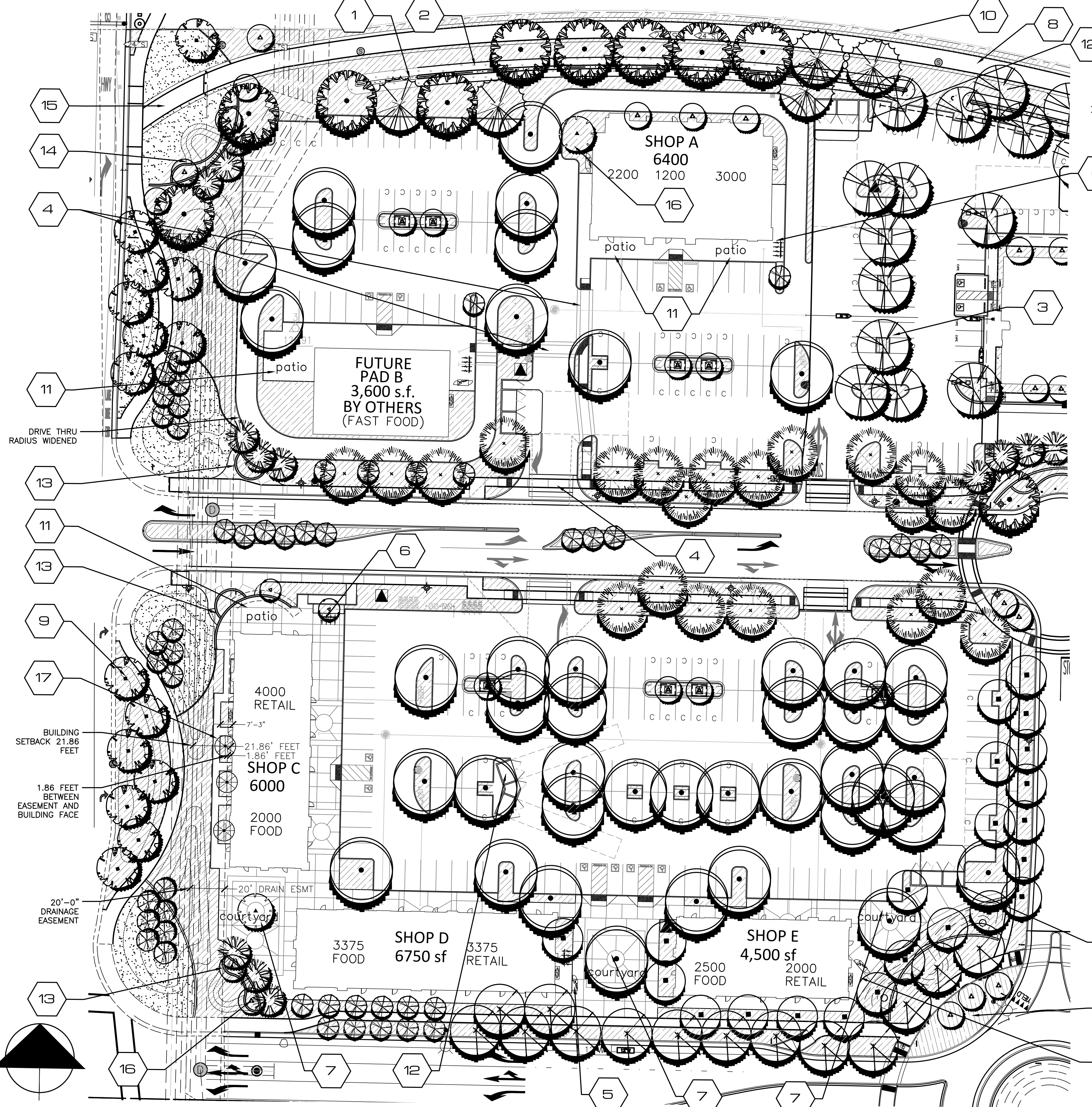
- A. STREETSCAPE DESIGN INTENT - Streetscape will be consistent with other projects within the area. Washington Blvd. will incorporate double row of trees per the Specific Plan requirements. The Acer rubrum was substituted for the Coast Live Oak as it is smaller and more compatible with the storm drain structures to the east. Street A will incorporate the use of Double Row of Ulmus parvifolia trees along with massed planted under story shrubs for interest, color, and accenting pedestrian paths. Street A terminates in a roundabout with signage and accent planting. Shrub masses will utilize drought tolerant species where appropriate.
- B. ENTRY TREATMENT - Entry will be highlighted by grove of Cercis canadensis 'Merlot' and Acer in a double row and a turf area with low background planting. Monument signage will flank entry and at Street A and Street B intersections. Under story will be low and conforming to an undulating ground contour, while maintaining sight lines. Use of colorful plant materials will further enhance and define the entries, along with drought tolerant species where appropriate.
- C. BUILDING ZONE - Focus is on connectivity for pedestrians. A variety of columnar and small scale trees with low contrasting shrub forms will be used to add interest, color, and texture. Several outdoor plaza spaces with tree wells will be incorporated between buildings.
- D. SCREENING INTENT - Primary planting along the south property lines are restricted in height due to overhead power line easement. However, a berm will be used to further mitigate views into project. Primary planting will consist of evergreen trees, Laurus nobilis and Rhampholepis Majestic Beauty for year round buffering of power lines and towers, and medium height shrubs to screen adjacent properties. Planting of the City owned 50' corridor will be provided where trail must be reconstructed to incorporate drainage swales and large evergreen screen trees will be used, along with a barrier type ground planting at the Park Site. All plant material shall be drought tolerant, A 42" open metal fence will be placed adjacent to parking lot where it abuts existing park site.
- E. Protected Preserve boundary area. Prior to construction of any phase of the project, high visibility temporary construction fencing shall be installed along the parcel adjacent to the Preserve. All construction activity must be per City requirements.
- F. Proposed Post and cable fencing.
- G. Minimum 36" high berm along south property line. See Grading Plans for maximum height.
- H. Park access from project.
- I. 42" high open metal fence adjacent to parking lot.
- J. EXISTING TRAIL - Existing trail will require removal and reconstruction to allow for proposed berming, overhead drainage release, drainage pipe coverage, and to place portions of the trail back on City property. Bollards placed adjacent to Summerhill Park for security purposes.
- K. HIGHWAY 65 DESIGN INTENT - The Highway 65 Corridor will be consistent with other projects in the area. Platanus acerfolia Bloodgood staggered approx. 30' O.C., with Cedrus deodora as well. A 5'0" wide D.O. trail is proposed within the 40' landscape setback along Hwy. 65. Trees shall not be planted min of 15' from ex. 24" sewer line. Mixed species and low forms of shrubs for interest, color, and buffering of the project from the highway. Shrub masses will utilize drought tolerant species where appropriate. Eastern boundary shall be limited to plant material as identified in the plant legend due to existing proximity of adjacent Parcel 84 Open Space. It is desired to integrate 5'0" d.g. trail within the 40' landscape setback.
- L. PARKING LOT INTENT - Designated trees will provide a canopy of shade. Under story plantings within the parking lot consist of low shrubbery and/or ground covers. Pedestrian access is provided from Parking lot to adjacent existing bike trail along the south property line.
- M. Proposed Decomposed Granite walking path adjacent to north project boundary.

### SHADE STUDY CALCULATIONS

PROJECT:	BAYSIDE HR PARCEL 49	05.24.17
OVERALL STAGE 1 SITE		
STANDARD STALLS	2,109	569,430
COMPACT STALLS	585	147,420
HANDICAP STALLS	51	12,852
TOTAL PAVED PARKING AREA:		729,702
TOTAL SHADE REQUIRED:	50%	364,851
TOTAL SHADE PROVIDED:		332,676
TOTAL SHADE PERCENTAGE		45.6%

SYMBOL	PATTERN	QTY.	UNIT	IN S.F.	TOTAL S.F.
<b>30 TO 35' TREES</b>					
ULMUS P., PINUS P.,	35-I	80	X	961	76,880
MAGNOLIA G., PLATANUS A.,	35-P	279	X	481	134,199
CEDRUS D., PISTACIA C.,	35-N	110	X	240	26,400
QUERCUS L.					
<b>25' TO 30' TREES</b>					
QUERCUS R., PINUS H.,	30-I	5	X	707	3,535
FRAXINUS P.,	30-P	26	X	354	9,204
	30-N	7	X	177	1,239
<b>20' TO 25' TREES</b>					
PYRUS C., ACER N.,	25-I	8	X	491	3,928
	25-P	40	X	246	9,840
	25-N	0	X	123	0
<b>15' TO 20' TREES</b>					
	20-I	0	X	314	0
	20-P	0	X	157	0
	20-N	0	X	79	0
<b>10' TO 15' TREES</b>					
COTINUS C., LAURUS N.,	15-I	175	X	177	30,975
CHILLOPSIS L., RHAPHOLEPIS L.,	15-P	406	X	88	35,728
PHOENIX, MALUS,	15-N	17	X	44	748
LAGERSTROEMIA I.					
<b>TOTAL</b>					<b>332,676</b>





**PLANT LIST AND LEGEND: STAGE 2 PERMIT**

USE TYPE	SYMBOL	BOTANICAL NAME COMMON NAME	SIZE/ SPACING	HGT/ WIDTH	WATER USE	USE TYPE	SYMBOL	BOTANICAL NAME COMMON NAME	SIZE/ SPACING	HGT/ WIDTH	WATER USE	
<b>■ PARKING LOTS AND PERIMETER</b>												
SHADE TREE	(Symbol)	QUERCUS VIRGINIANA SOUTHERN LIVE OAK	15 G./VARIES 60"/40"	MATCHED	MED	SUBORDINATE & SCREEN TREES	(Symbol)	PINUS HALEPENSIS ALLEPO PINE	15 G./VARIES 40"/40"	MATCHED	LOW	
	(Symbol)	PLATANUS ACERFOLIA "BLOODGOOD" LONDON PLANE TREE	15 G./VARIES 60"/40"	MATCHED	LOW		(Symbol)	CEDRUS DEODORA DEODAR CEDAR	24 BOX	70"/35"	MATCHED	LOW
	(Symbol)	PODOCARPUS GRACILIOR FERN PINE	24" BOX / 40"/35"	MATCHED	LOW		(Symbol)	QUERCUS LOBATA VALLEY OAK	15 G./VARIES 60"/50"	MATCHED	LOW	
	(Symbol)	QUERCUS X ROBUR CRIMSON SPIRE OAK	15 G./VARIES 50"/20"	MATCHED	MED	ACCENT TREE	(Symbol)	CERCIS CANADENSIS "MERLOT" MERLOT EASTERN REDBUD	24 BOX	20"/15"	MATCHED	LOW
	(Symbol)	ACER RUBRUM "RED SUNSET" RED MAPLE	15 G./VARIES 50"/25"	MATCHED	MED		(Symbol)	LAGERSTROEMIA X. ARAPAHO CRAPE MYRTLE	24 BOX	20"/15"	MATCHED	LOW
	(Symbol)	ACER X NIGRUM GREENCOLUMN BLACK MAPLE	15 G./VARIES 50"/25"	MATCHED	MED		(Symbol)	PYRUS CALLERYANA "RED SPIRE" FLOWERING PEAR	24 BOX	35"/25"	MATCHED	MED
	(Symbol)	PISTACIA CHINENSIS CHINESE PISTACHE	15 G./VARIES 40"/30"	MATCHED	MED		(Symbol)	QUERCUS WISLEZNEII INTERIOR LIVE OAK	36" BOX /VARIES	40"/40"	NATURAL	LOW
	(Symbol)	POPULUS ALBA PYRAMIDIALIS BOWHALL POPLAR	24" BOX /VARIES	80"/15"	MATCHED	MED		PODOCARPUS HENKELII LONG LEAFED YELLOW WOOD	24" BOX	30"/15"	NATURAL	MOD
	(Symbol)	ZELKOVA SERRATA "VILLAGE GREEN" SAWLEAF ZELKOVA	24" BOX /VARIES	45"/35"	MATCHED	MED		ACER RUBRUM BOWHALL BOWHALL MAPLE	24" BOX	40"/15"	MATCHED	MOD

NOTE: LANDSCAPE ARCHITECT RESERVES THE RIGHT, UPON CITY APPROVAL, TO SUBSTITUTE PLANT MATERIAL DUE TO INHERENT AVAILABILITY SHORTAGES OR ENVIRONMENTAL RESTRICTIONS.

**■ SHRUB AND GROUNDCOVERS**

**BACKGROUND OR FOUNDATION SHRUB MATERIAL**  
EVERGREEN, LARGE SHRUBS TO 6'-0" USED FOR REDUCING BUILDING MASS OR SCREENING UNDESIRABLE VIEWS.

Botanical Name	Size (Min.)	Spacing (Min.)	Water Use
ARCHTOSTAPHYLOS H. MCMINN	1 1/2 GAL.	5' o.c.	LOW
ARBITUS U. COMPACTA	1 1/2 GAL.	3' o.c.	LOW
GREVILLEA CANGERRA	1 1/2 GAL.	6' o.c.	LOW
NERIUM OLEANDER "MRS. ROEDING"	1 1/2 GAL.	6' o.c.	LOW
FRANGULA CALIFORNICA	1 1/2 GAL.	6' o.c.	LOW
RHAPHILEPS "JACK EVANS"	5 GAL.	6' o.c.	MED
XYLOSMA C. "COMPACTA"	5 GAL.	3' o.c.	LOW

**FACER SHRUB MATERIAL**  
EVERGREEN OR DECIDUOUS SHRUBS TO 4'-0". USED FOR "TERRACING" OF PLANT MATERIAL. SEASONAL COLOR AND SOFTENING OF BUILDING EDGES AND FOUNDATION SHRUBS.

Botanical Name	Size (Min.)	Spacing (Min.)	Water Use
CEANOTHUS SPP.	1 1/2 GAL.	3' o.c.	LOW
RHAMNUS "SAN BRUNO"	5 GAL.	4' o.c.	LOW
CISTUS SP.	1 1/2 GAL.	5' o.c.	LOW
CALLISTEMON LITTLE JOHN	1 GAL.	3' o.c.	LOW
LEPTOSPERMUM SPP.	1 1/2 GAL.	4' o.c.	MED
RHAPHOLEPS SPP.	1 1/2 GAL.	4' o.c.	MOD
ROSMARINUS O. TUSCAN BLUE	1 GAL.	3' o.c.	LOW

**WATER QUALITY AREAS**  
EVERGREEN OR PERENNIAL SHRUBS TO 30" HIGH. USED TO BLANKET LARGER AREAS AND AS A FILLER BETWEEN SITE WORK EDGES AND FACER SHRUBS.

Botanical Name	Size (Min.)	Spacing (Min.)	Water Use
CORNUS SERICEA	1 GAL.	4' o.c.	MOD
FESTUCA RUBRA	1 GAL.	18" o.c.	LOW
FESTUCA IDAHOENSIS	1 GAL.	18" o.c.	LOW
JUNJUS BALTICUS	1 GAL.	18" o.c.	LOW
PRUNUS CISTENA	1 GAL.	5' o.c.	LOW
ELYMUS SPP.	1 GAL.	18" o.c.	LOW
SPIREA SPP.	1 GAL.	18" o.c.	MOD
MAHONIA COMPACTA	1 GAL.	3' o.c.	LOW

**ACCENT SHRUB MATERIAL**  
EVERGREEN OR PERENNIAL SHRUBS TO 3'-0". SOMETIMES LARGER. USED FOR AESTHETIC VALUE IN LANDSCAPE THROUGH BLOOM, LEAF COLOR, OR OVERALL CHARACTER.

Botanical Name	Size (Min.)	Spacing (Min.)	Water Use
HESPERALOE SPP.	1 GAL.	18" o.c.	MED
DIETES SP.	1 GAL.	3' o.c.	LOW
HEMERCALLIS HYBRIDS	1 GAL.	2' o.c.	MED
LAVANDULA SP.	1 GAL.	2' o.c.	LOW
MAHONIA A. "COMPACTA"	1 1/2 GAL.	3' o.c.	LOW
CALLISTEMON LITTLE JOHN	1 GAL.	3' o.c.	LOW
NANDINA "HARBOR DWARF"	1 GAL.	3' o.c.	MED
PENNISETUM SP.	1 GAL.	2' o.c.	LOW

**GROUND COVER MATERIAL**  
EVERGREEN OR PERENNIAL SHRUBS TO 30" HIGH. USED TO BLANKET LARGER AREAS AND AS A FILLER BETWEEN SITE WORK EDGES AND FACER SHRUBS.

Botanical Name	Size (Min.)	Spacing (Min.)	Water Use
ARCTOSTAPHYLOS SP.	1 GAL.	36" o.c.	LOW
BACCHARIS PILULARIS	1 GAL.	24" o.c.	LOW
COPROSMA X KIRKII	1 GAL.	36" o.c.	MOD
NANDINA H DWARF	1 GAL.	24" o.c.	LOW
ROSMARINUS O. "PROSTRATUS"	1 GAL.	36" o.c.	LOW
ROSA "FLOWER CARPET" SP.	1 GAL.	36" o.c.	MOD
TRACHELOSPERMUM JASMINOIDES	1 GAL.	24" o.c.	MOD
LONGICERA INTERRUPTA	1 GAL.	24" o.c.	LOW
ROSA SPP.	1 GAL.	3' o.c.	LOW

**KEYNOTES**

- | DESCRIPTION                                                            | SYMBOL   |
|------------------------------------------------------------------------|----------|
| 1. PROPOSED VEGETATIVE SWALE                                           | (Symbol) |
| 2. PROPOSED WATER QUALITY BASIN                                        | (Symbol) |
| 3. PARKING LOT TREES                                                   | (Symbol) |
| 4. ENHANCED PEDESTRIAN LINKAGE                                         | (Symbol) |
| 5. PROPOSED BIKE LOCKERS                                               | (Symbol) |
| 6. PROPOSED BIKE RACKS                                                 | (Symbol) |
| 7. PROPOSED COURTYARDS                                                 | (Symbol) |
| 8. PROPOSED PERIMETER TRAIL                                            | (Symbol) |
| 9. DENOTES LANDSCAPED AREA                                             | (Symbol) |
| 10. EXISTING PERIMETER FENCE                                           | (Symbol) |
| 11. PROPOSED OUTDOOR AMENITY/SEATING AREA                              | (Symbol) |
| 12. PROPOSED TRASH ENCLOSURE                                           | (Symbol) |
| 13. PROPOSED DECORATIVE PLANTER WALLS                                  | (Symbol) |
| 14. PROPOSED ENTRY FEATURE WALL                                        | (Symbol) |
| 15. PROPOSED PEDESTRIAN LINK TO PERIMETER TRAIL AND SEWER ACCESS ROAD. | (Symbol) |
| 16. PROPOSED SPECIMEN ACCENT TREES                                     | (Symbol) |
| 17. PROPOSED NARROW ACCENT TREE IN PLANTER ADJACENT TO BUILDING C      | (Symbol) |
- \* NOTE FURNISHINGS TO BE FINISHED IN BRONZE COLOR

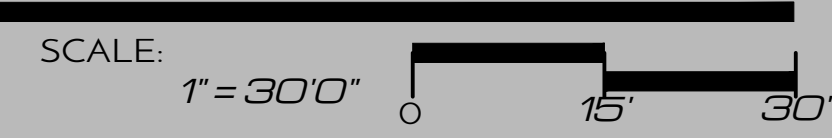
**SHADE STUDY CALCULATIONS**

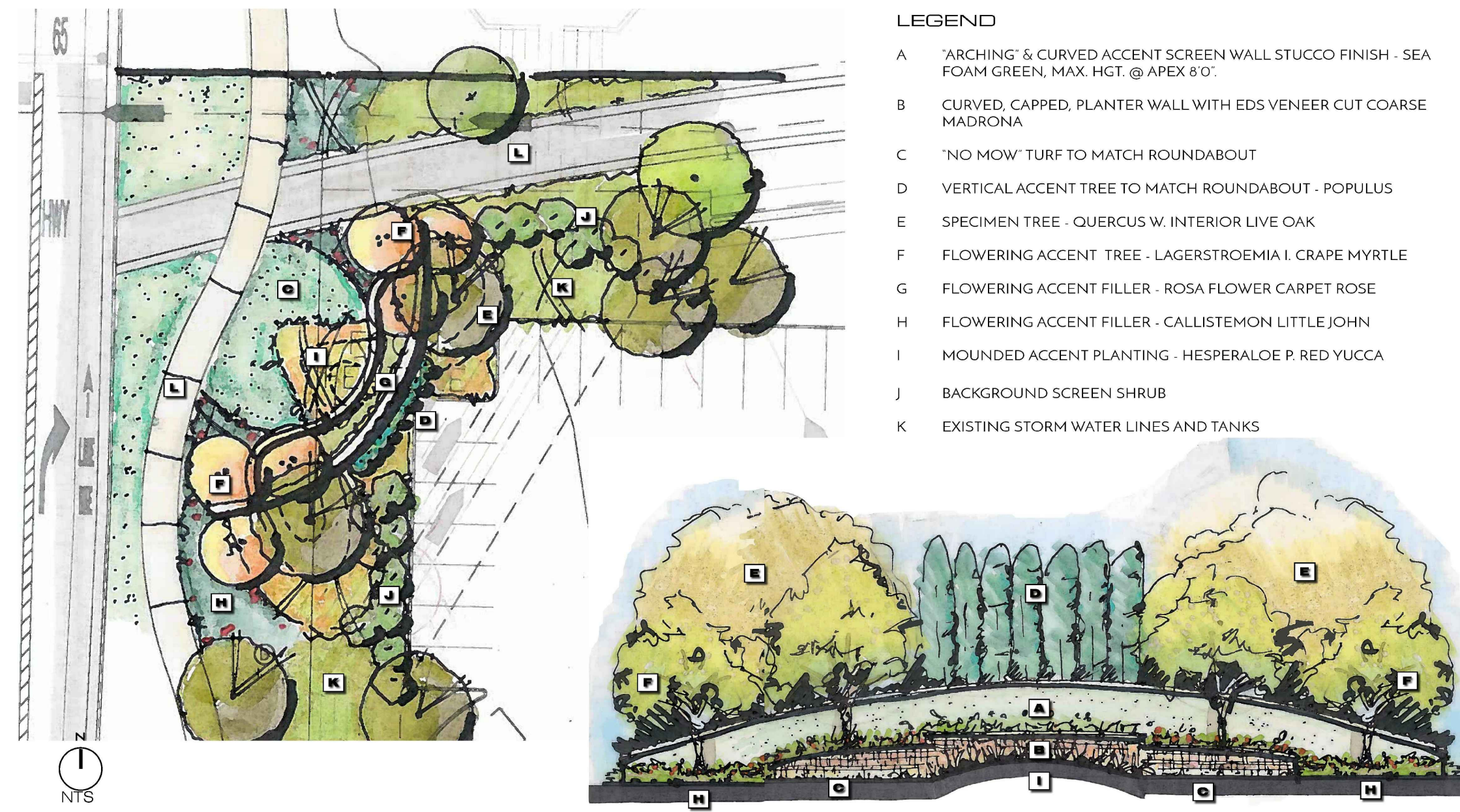
PROJECT: PARCELS 1 & 2 STAGE 2 5/17/17

OVERALL PARCELS 1 & 2 STAGE 2 SITE

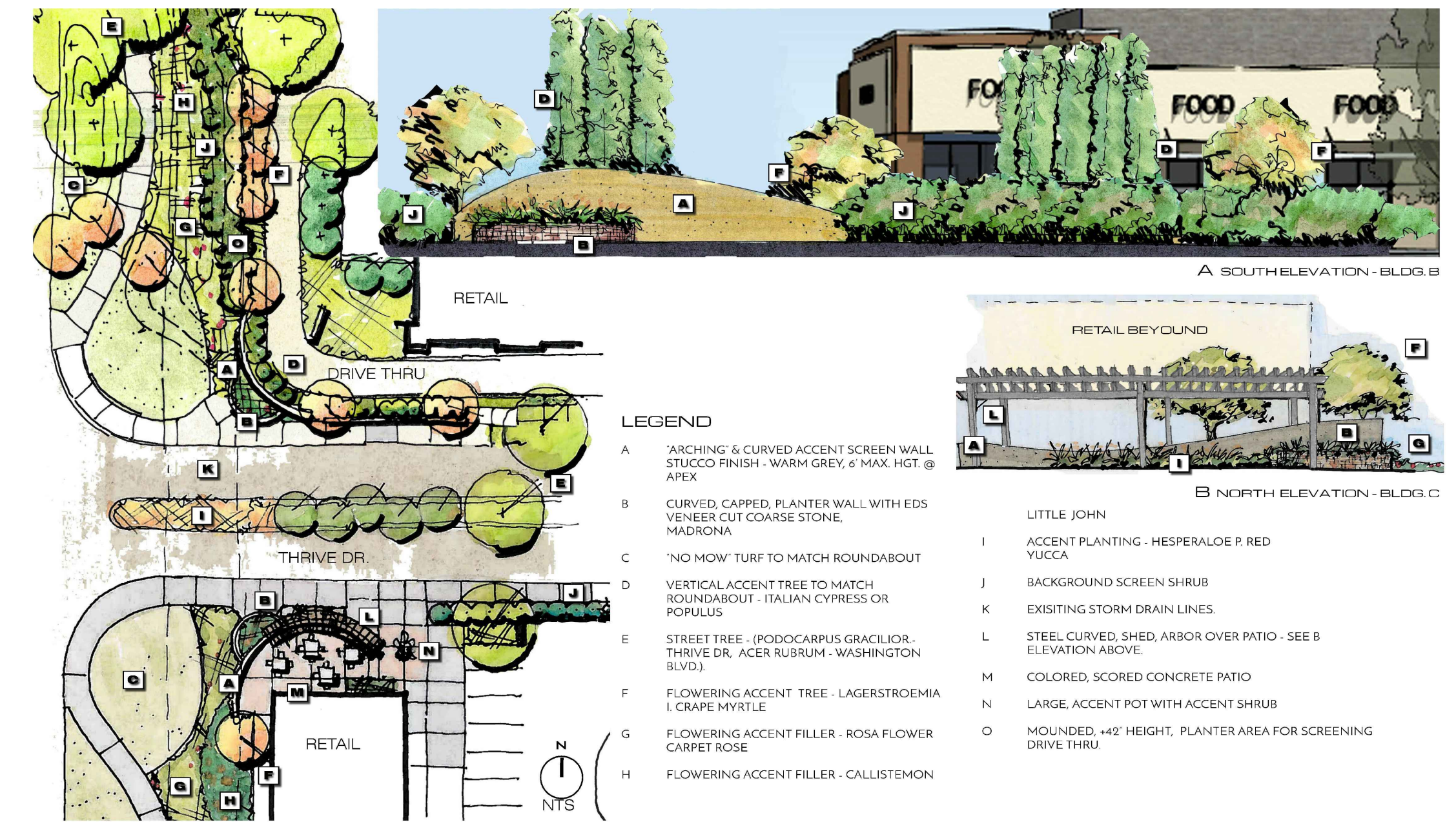
STANDARD STALLS	185	49,500
COMPACT STALLS	67	16,884
HANDICAP STALLS	10	2,520
TOTAL PAVED PARKING AREA:		68,904
TOTAL SHADE REQUIRED:	50%	34,672
TOTAL SHADE PROVIDED:		35,330
TOTAL SHADE PERCENTAGE		50.9%

SYMBOL	PATTERN	QTY.	UNIT	TOTAL S.F.
<b>30 TO 35" TREES</b>				
ULMUS P., PINUS P.	35-1	4	X 961	3,844
MAGNOLIA G., PLATANUS A., CEDRUS D., PISTACIA C., QUERCUS L.	35-N	11	X 240	2,640
<b>25 TO 30" TREES</b>				
QUERCUS R., PINUS H., FRAXINUS P.	30-1	0	X 707	0
QUERCUS L.	30-N	0	X 177	0
<b>20 TO 25" TREES</b>				
QUERCUS L., ACER N.	25-1	8	X 491	3,928
QUERCUS L.	25-N	6	X 246	1,476
QUERCUS L.	25-N	0	X 123	0
<b>15 TO 20" TREES</b>				
QUERCUS L.	20-1	0	X 314	0
QUERCUS L.	20-P	0	X 157	0
QUERCUS L.	20-N	0	X 79	0
<b>10 TO 15" TREES</b>				
COTINUS C., LAURUS N., CHILIPIS L., RHAPHOLEPS L., PHOENIX PALMUS, LAGERSTROMIA L.	15-1	2	X 177	354
QUERCUS L.	15-P	0	X 88	0
QUERCUS L.	15-N	0	X 44	0
<b>TOTAL</b>				<b>35,330</b>





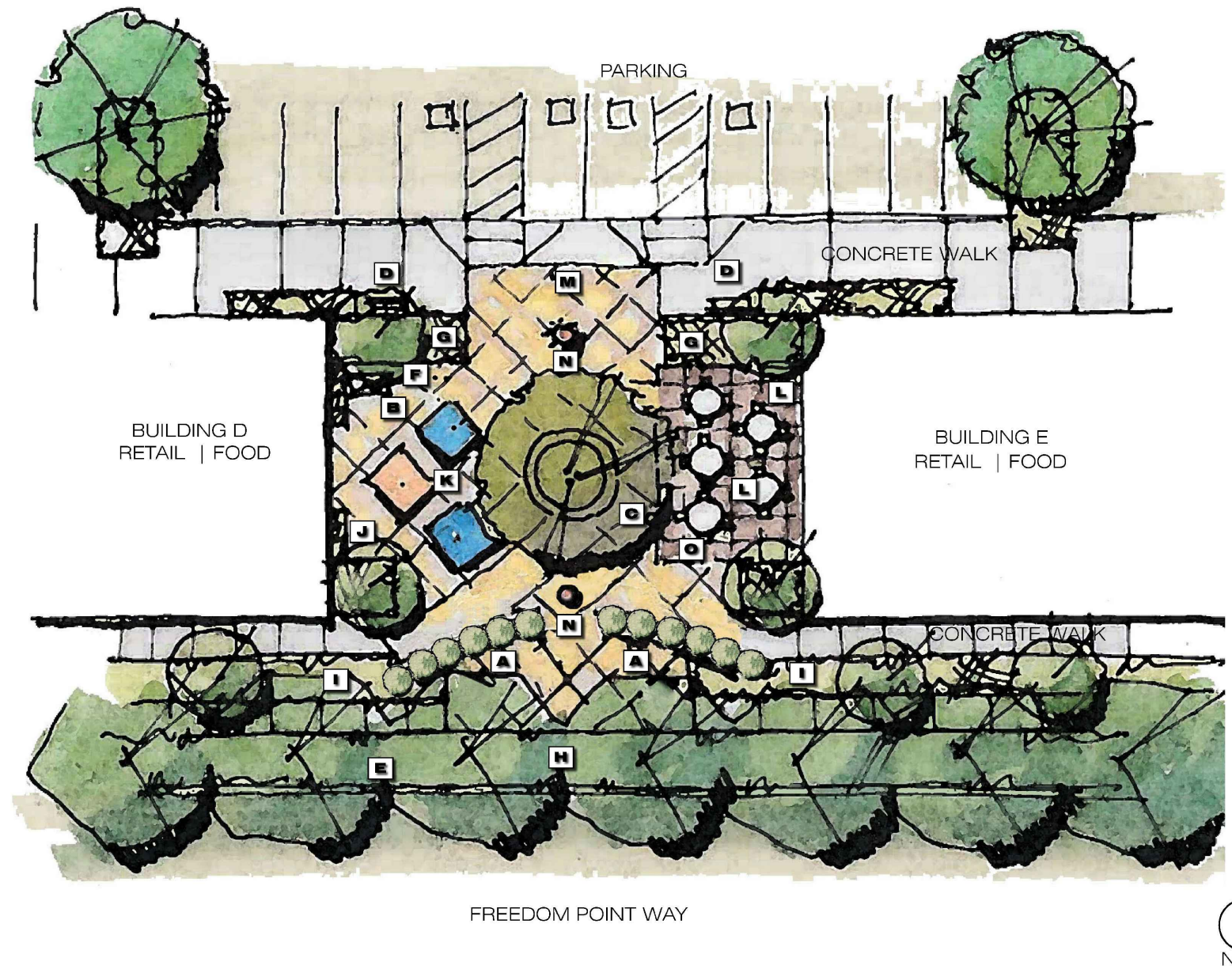
1 CORNER TREATMENT



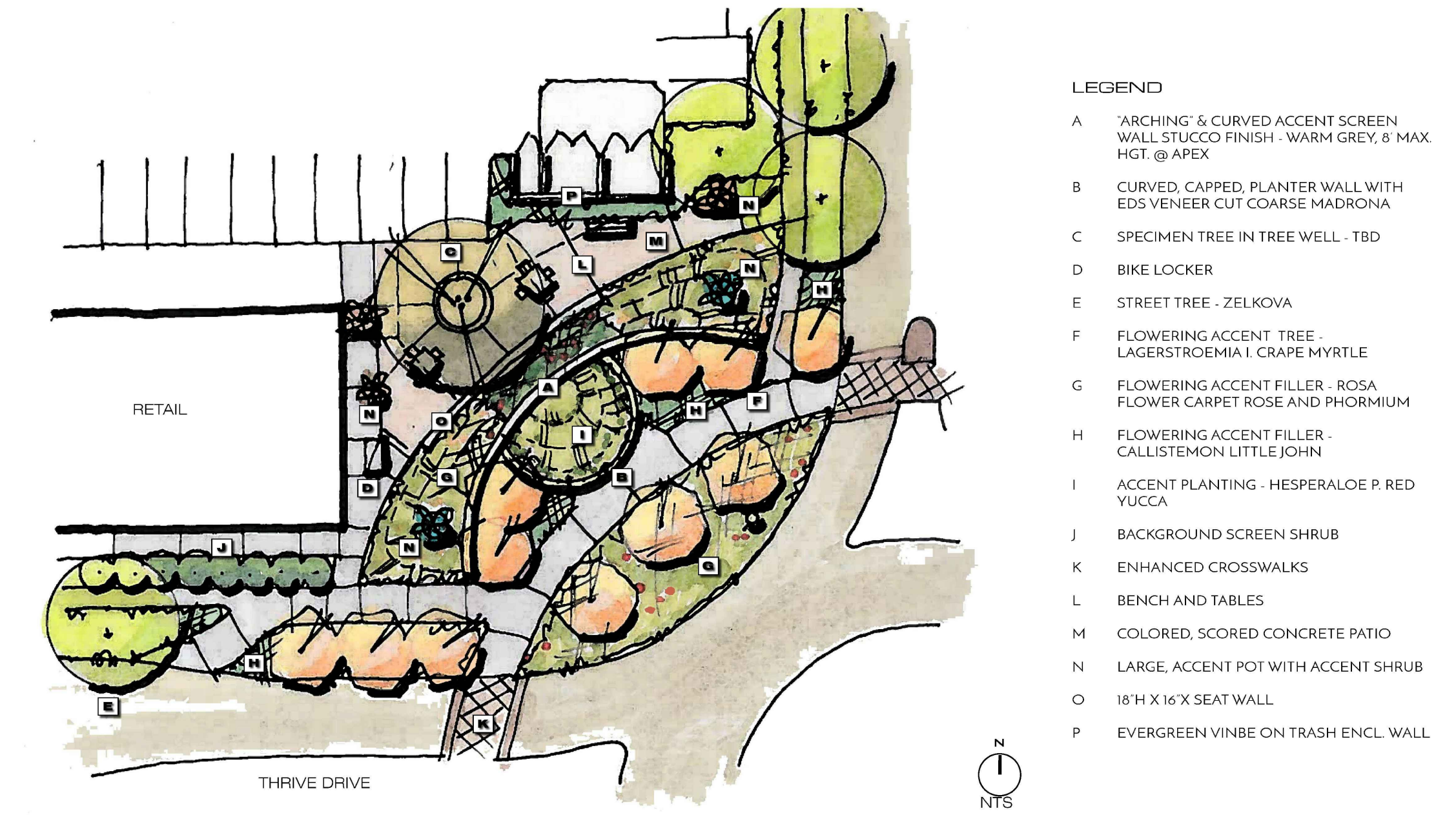
2 ENTRY AT THRIVE DRIVE



3 COURTYARD AT BUILDINGS C & D



4 COURTYARD AT BUILDINGS D & E



5 COURTYARD AT ROUNDABOUT

